

CY&BC CRUISER / EBOAT COURSES 2011

All Classes shall pass between the Poolbeg and North Bull lights and North of the North Bank Light House when racing.

Wind Dir.	No	miles	Course
NW+W+SW. short	1	4	L-Vp-Hs-SWp-CHp-NBs-L
NW+W+SW. long	2	6	L-Vp-Hs-SWp-CHp-SWp-CHp-NBs-L
NE+E+SE. short	3	4	L-Ss-Hp-NBp-CHs-SWs-Hp-Vs-Line
NE+E+SE long	4	6	L-Ss-Hp-NBp-CHs-SWs-CHp-NBs-Vs-L
West short	5	5.5	L-Vp-NBp-CHs-BIs-INS-CHp-NBs-L
West long	6	7.5	L-Vp-NBp-CHs-DRp-BIp-CHp-NBs-L
South West short	7	6	L-Vp-NBp-CHs-INp-CWp-CHp-NBs-L
South West long	8	7.5	L-Vp-NBp-CHs-Op-SUTp-CHp-NBs-L
South short	9	6	L-NBp-CHs-CWs-INS-CHp-SWs-Hp-Vs-L
South long	10	7	L-NBp-CHs-CWs-INS-BIp-CHp-SWs-Hp-Vs-L
South East short	11	6	L-NBp-CHs-BIs-INS-CHp-SWs-Hp-Vs-L
South East long	12	7	L-NBp-CHs-CWs-Os-CHp-SWs-Hp-Vs-L
East short	13	6.5	L-NBp-CHs-BIs-Os-CHp-SWs-Hp-Vs-L
East long	14	7.5	L-NBp-CHs-BIs-DRs-CHp-SWs-Hp-Vs-L
North East short	15	6	L-NBp-CHs-CWs-CHp-SWs-Hp-Vs-L
North East long	16	7	L-NBp-CHs-SUTs-CHp-SWs-Hp-Vs-L
North short	17	5.5	L-Vp-NBp-CHs-BIs-INS-CHp-NBs-L
North long	18	7	L-Vp-NBp-CHs-BIs-INp-CWp-BIp-CHp-NBs-L
North West short	19	5.5	L-Vp-NBp-CHs-INp-BIp-CHp-NBs-L
North West long	20	8	L-Vp-NBp-CHs-DRp-SUTp-CHp-NBs-L
West Inner	21	3.3	L-Vp-CHp-NBs-L
South Inner	22	2.5	L-Ss-NBs-Vs-L
East Inner	23	1.3	L-Ss-Hs-Vs-L
North Inner	24	2.6	L-Vp-NBp-L

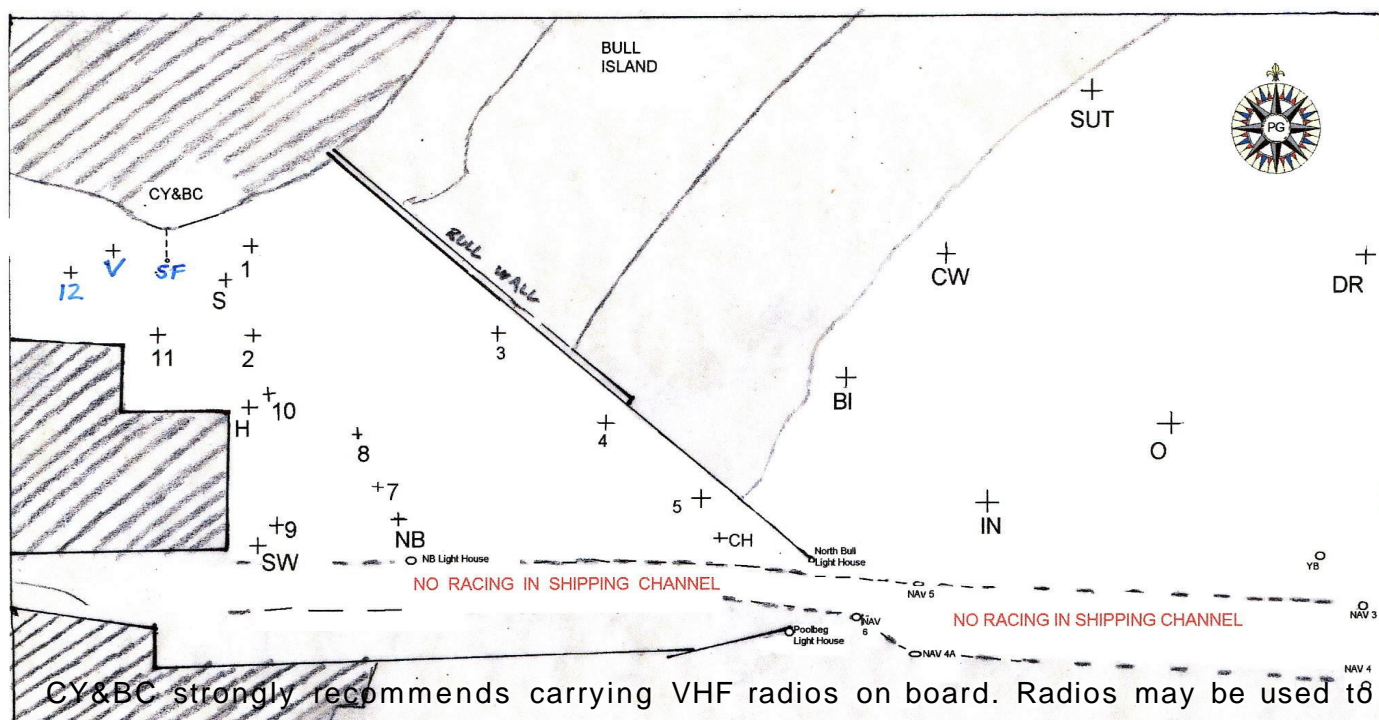
L=Start & Finish Line. V=Vernon. H=Hub. S=Spit. SW=South West. NB=North Bank . CH=Churn. BI=Bull Island. O=Outer. SUT=Sutton. DR=Drumleck. CW=Causeway. IN=InnerMark

Approx. positions for Dublin Bays Marks.

Inner 53°20.80N 006°08.2W Bull Island 53°21.10N 006°08.8W

Causeway 53°21.50N 006°08.4W Sutton 53°21.80N 006°07.8W

Outer 53°21.00N 006°07.5W Drumleck 53°21.40N 006°07.0W



CY&BC strongly recommends carrying VHF radios on board. Radios may be used to issue changes to sailing instructions and shorten races. Ch 37 - Launch; Ch 73 - Racing